

BioTector TOC TN TP Major Components

Analysis Enclosure

Figure 1 and table 2 below shows the major analysis enclosure components of BioTector TOC TN TP Analyzer.

Figure 1 BioTector analysis enclosure major components

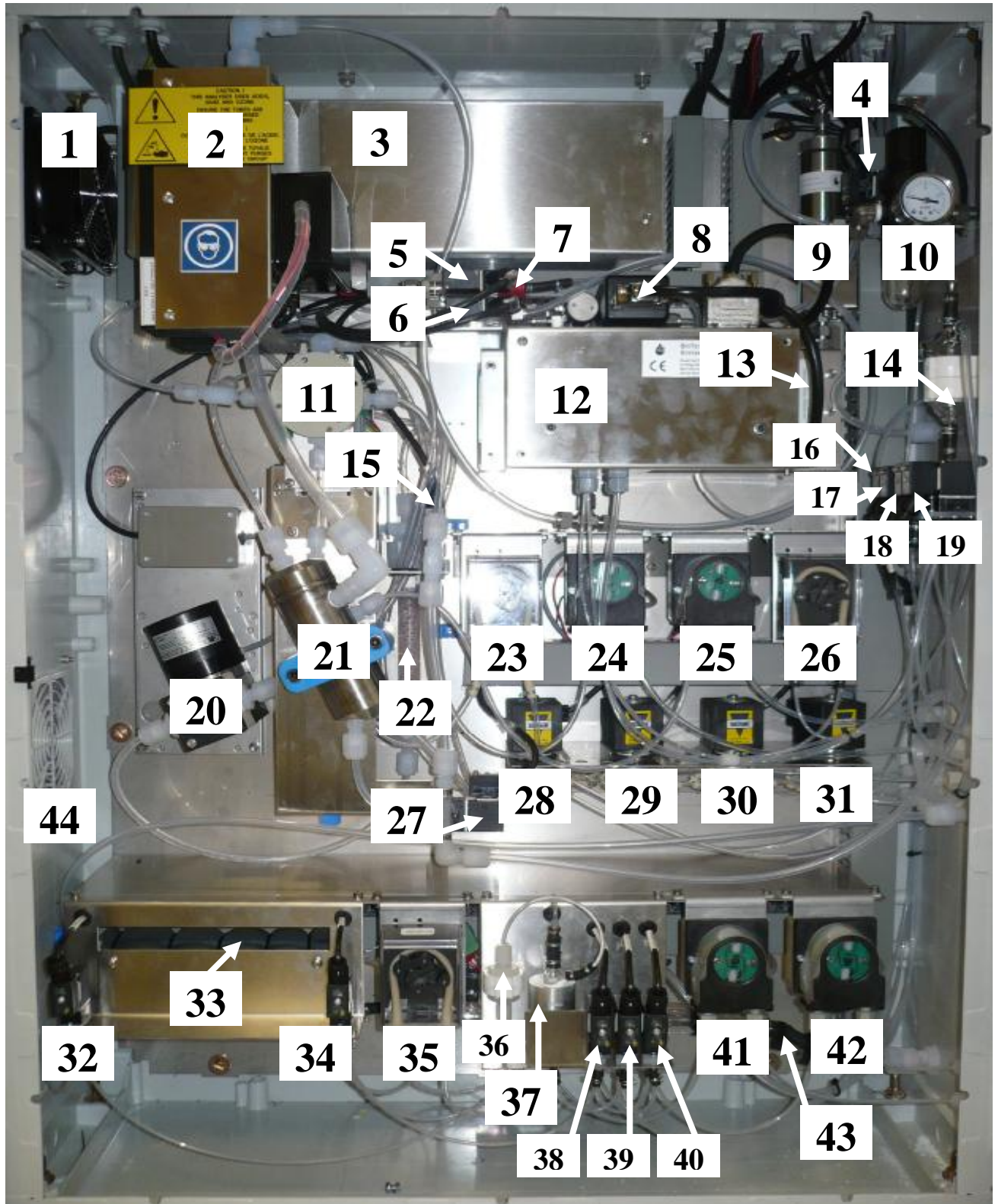


Table 2 BioTector analysis enclosure major components

1	Fan	10-RTL-001 230v 10-RTL-001 115v Contact BioTector if to be used in Purge ready or Hazardous area enclosure
2	Cooler	19-PCS-002
3	Ozone Generator	19-TDK-001 & 10-OCB-001 & 10-OCB-003
4	Exhaust Valve, MV1	19-EMC-002
5	Injection Valve, MV7	19-EMC-003
6	Purge Valve, MV51	19-EMC-003 – Only in MCR systems
7	Non-return Valve (Check Valve)	10-SMR-001
8	Mass Flow Controller	10-PCP-001 BT-UPG-024 Upgrade for new Massflow controller
9	Ozone Destructor	12-PCS-001
10	Oxygen Regulator	19-MAC-001
11	Sample Valve (ARS Valve), MV4	10-EMT-004 PEEK Valve only 19-ARS-001 PEEK Valve complete 10-EMT-043 High Range Valve 19-ARS-004 High Range Valve complete 10-IVF-053 SS Valve 19-ARS-002 SS Valve complete
12	Dual Cell Photometer Module (DCP Module)	19-TND-002 *Cells purchased separately*
13	NDIR CO ₂ Analyzer	Check BioTector Range
14	Oxidized Sample Catch-pot/Cleaning Vessel	10-KBS-019
15	Acid Valve, MV6	19-EMC-003
16	Sample Loop Valve, LV4	19-EMC-009
17	NP Sample Valve, LV3	19-EMC-009
18	DI Water Valve, LV2	19-EMC-009
19	TN Cleaning Valve, LV1	19-EMC-009
20	Circulation Pump (KNF 300), P2	Check BioTector for pump type & voltage
21	Multi-Component Reactor (MCR)	Contact BioTector
22	PFA Glass Beads Chamber	19-PCS-034
23	Sample Pump, P1	19-MAX-004*
24	Acid Pump, P3	19-ASF-004
25	Base Pump, P4	19-ASF-004
26	N Pump (Nitrogen Pump), LP1	19-MAX-004
27	Sample Out Valve, MV5	19-EMC-003**
28	Cleaning Valve, MV3	12-SIR-001
29	Zero Water Valve (Zero Calibration Valve), MV15	12-SIR-001
30	Manual/Calibration Valve (Span Calibration Valve), MV9	12-SIR-001
31	Multi-Stream Valve, MV12-MV13	12-SIR-001
32	Boiler Drain Valve, LV9	19-EMC-012
33	TP Boiler	19-TNP-002
34	Boiler Valve, LV8	19-EMC-009
35	P Pump (Phosphorus Pump), LP2	19-MAX-004
36	Liquid Phase Filter	19-TNP-005
37	TP _r Boiler (Heated Mixer & Bubble Remover)	19-TNP-004
38	Diversion Valve, LV5	19-EMC-009
39	Cell Valve, LV7	19-EMC-009
40	TP Reagent Valve, LV6	19-EMC-009
41	HCl Acid Pump, LP5	19-ASF-006

42	TP Reagent Pump, LP4	19-ASF-006
43	Drain Chamber	10-KBS-010 (Glass only)
44	Vent	10-RTL-003**is not fitted in a Purge or Hazardous area BioTector**

***Standard sample pump, check parts list supplied in the BioTector User Manual for special applications**

**** If the Sample out valve has a 3 way valve (ie 3 fittings installed) then the code for the sample out valve is 19-EMC-003.**

If the sample out valve has a 2 way valve (ie 2 fittings installed) then the code for the sample out valve is 19-EMC-001

Electronics Enclosure

Figure 2 and table 3 below shows the major electronics enclosure components of BioTector TOC TN TP Analyzer.

Figure 2 BioTector electronics enclosure major components

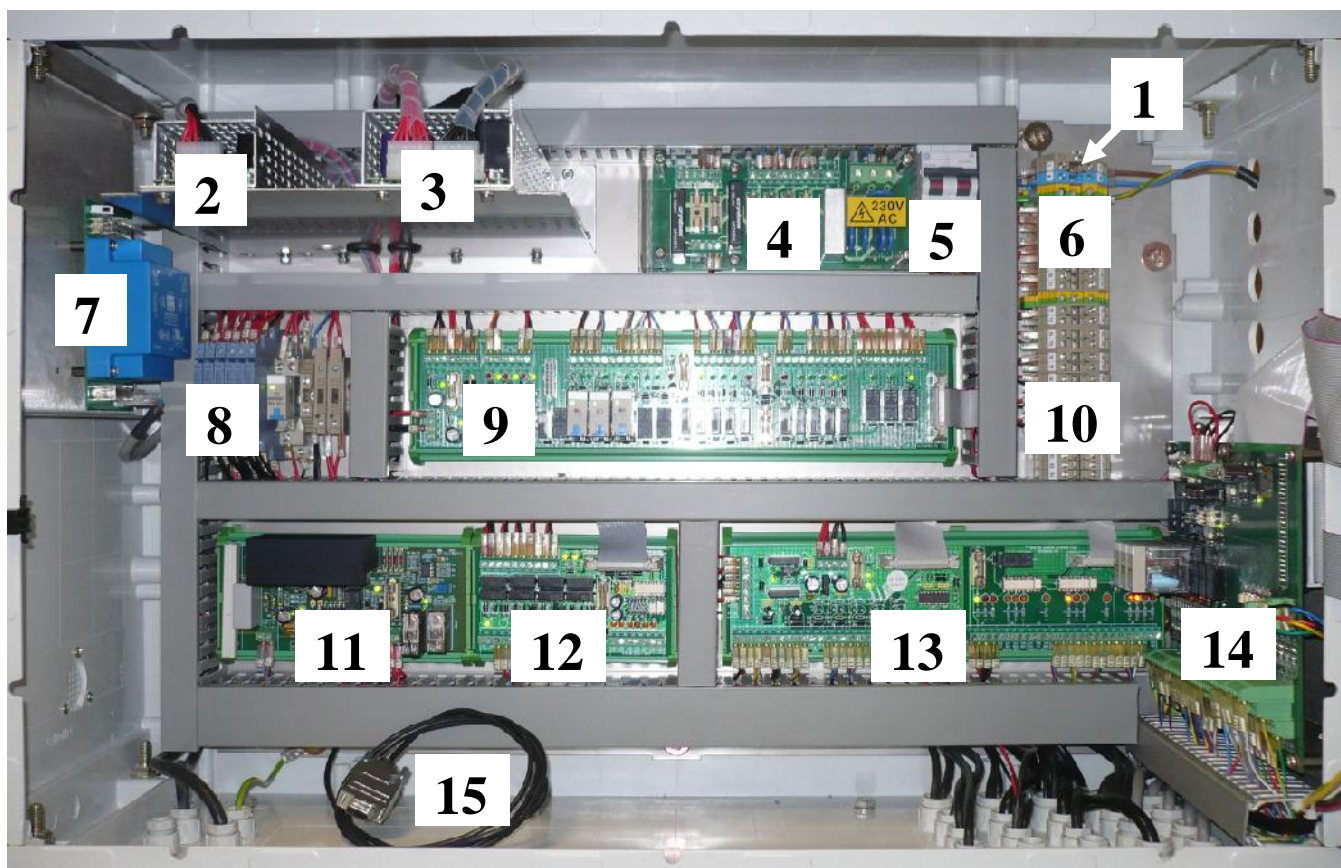


Table 3 BioTector electronics enclosure major components

1	Mains Terminals	Not for resale
2	Power Supply (for Main Board/Motherboard)	10-CLK-001
3	Power Supply (for Pumps and Valves)	10-CLK-002
4	Power PCB (Mains PCB)	19-PCB-003
5	Main Power Switch	10-RGF-018
6	Relay Terminals	Not for resale
7	TP Boiler Transformer & TP Boiler Transformer PCB	19-PCB-032
8	4-20mA Isolators	10-KNK-001
9	Relay PCB	19-PCB-004
10	Stream Alarm Terminals & 4-20mA Terminals	Not for resale
11	Ozone PCB	19-PCB-039
12	Stream Expansion PCB (Auxiliary PCB)	19-PCB-007
13	Signal PCB	19-PCB-005
14	NP I/O PCB (Nitrogen Phosphorus Input/Output PCB)	19-PCB-031
15	RS232 Data Cable	No Longer supplied

Figure 3 and table 4 below shows the BioTector main board (motherboard) components.

Figure 3 BioTector main board components

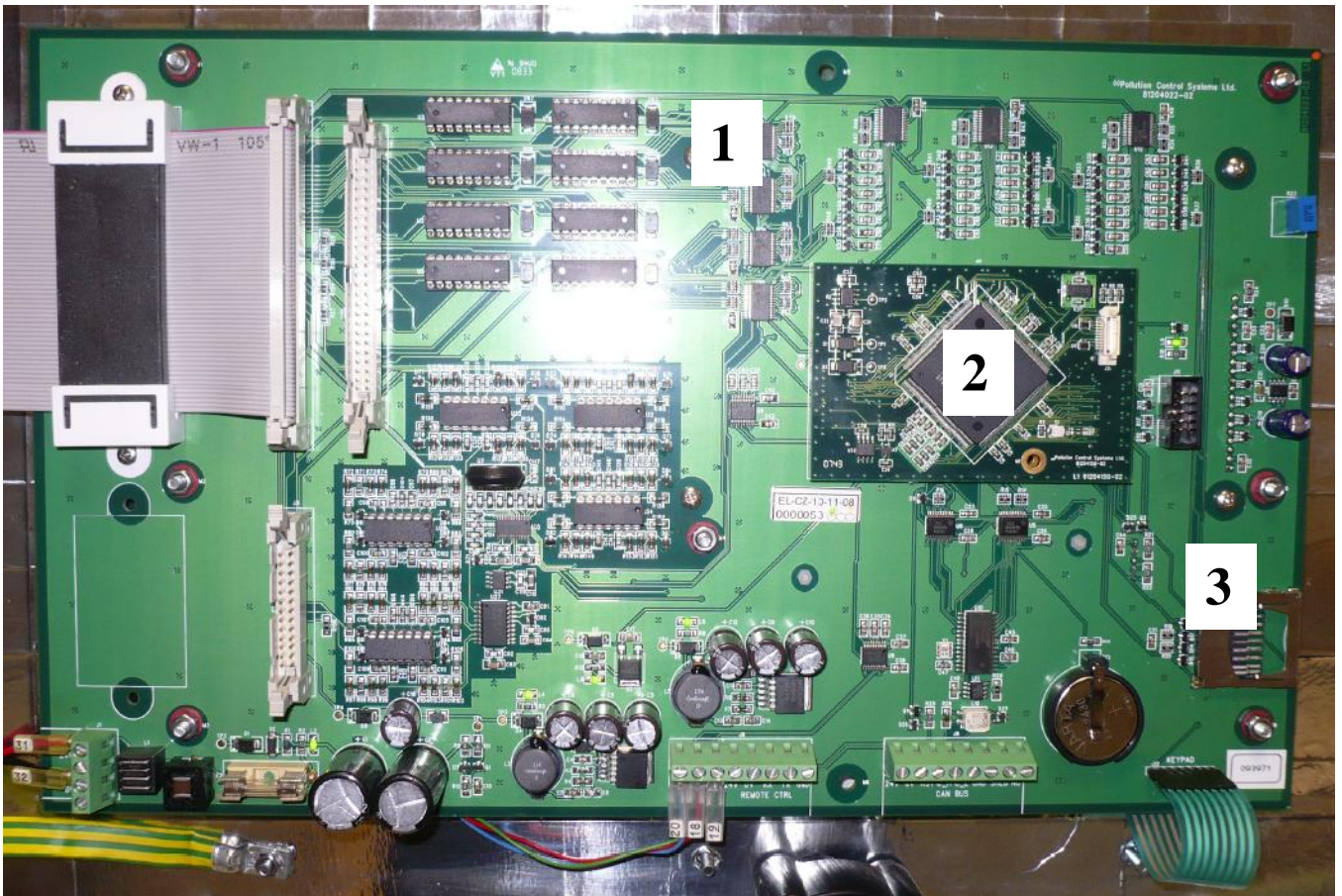


Table 4 BioTector main board components

1	Main Board (Motherboard)	19-PCB-030 – Complete BioTector serial number required
2	Processor PCB	Included in the above
3	MMC/SD Flash Memory Card Slot	